

Specimens Collection, Transport and Preservation System

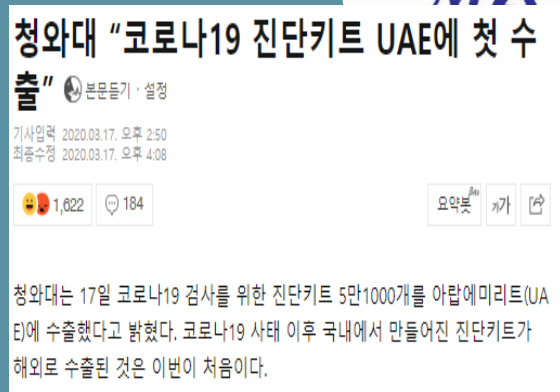
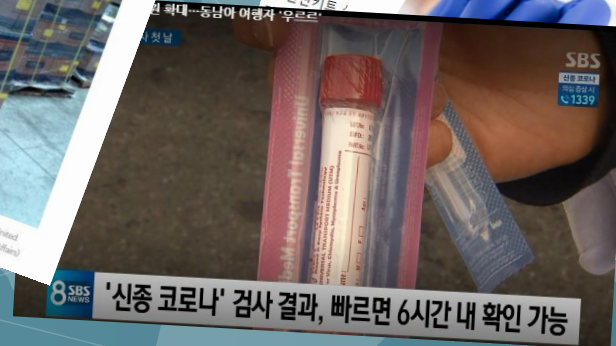
Noble Biosciences, Inc.



With NOBLE BIO

Noble Biosciences, Inc. is growing up fast based on the environmental friendly and innovative technologies by constant research and development on the in vitro diagnostics and life sciences area.

Noble Biosciences, Inc.



Profile

2008.	07	Established Noble Biosciences, Inc.
	08	Launch NobleChem™ Premade Solution
	09	Launch Rest™ Screw Cap Tube
	10	Launch Disposable Cotton Swab
2009.	01	Launch NobleZyme™ Taq DNA Polymerase
	02	Move the headquarters
	05	Technical development contract of the Real Time PCR Kit
	07	Launch Nylon Flocked Swab
2010.	02	Participated in Gyunggi Regional Research Center Business
		Launch Silicon Swab for Fecal of Blood Test
2011.	09	Launch New Tube of Diagnostic System
2012.	06	Patent for a silicon swab contain protective tube
	10	Expert LED Illuminator to USA
2013.	04	Carry out the Small and Medium Business Administration Business
	05	Move the headquarters
	06	Carry out the Small and Medium Business Administration Business
2014.	01	Registered Medical Device Manufacturer
	04	Certified for ISO 9001 and 13485
	06	Patent for tube of fecal blood test
	10	Patent for LED transilluminator
	12	Patent for specimen container assembly for diagnostics
		Licensed Medical Device Manufacturer
		Carry out the GSTEP Business



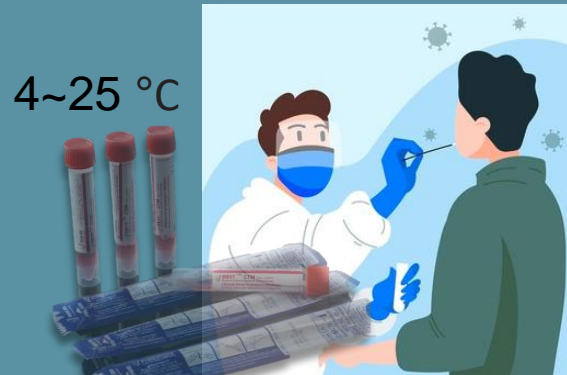
2015.	01	Registered Good Manufacturing Practices(GMP)
2016	07	ISO 13485:2016 Certification
	07	CE M2016.106.7066 Certification
	07	ISO 9001:2008 Certification
	10	CLSI Membership(0006193070)
2017	01	Nominated Global Procurement Company(20170101444)
2018	10	Patent(1020180122456: MEDIUM COMPOSITION REDUCED DEGRADATION OF INGREDIENT BY GAMMA-RAY IRRADIATION)
2019	11	Medical Device Manufacture & Quality Control Certification(KTL-ACAA-6894)
2020	02	Korean Medical Device Class II Certification(20-4105)
	03	Nominated Inno-Biz(170605-0025)
	09	



We equipped with self-production facilities for our own brands therefore able to deal with any emergency

We are coping against the COVID-19 and any threat to human-beings

Flagship Business



Sample Collection



Preservation and Transport



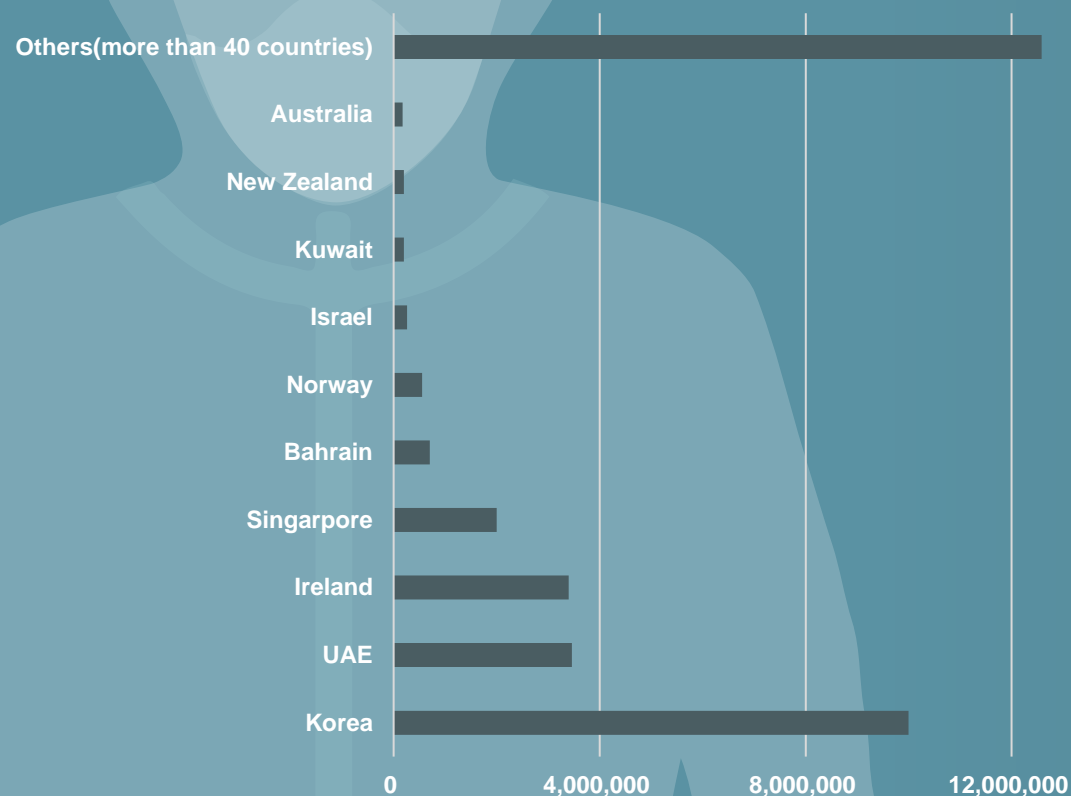
Analysis

Noble Biosciences's flagship Business is IVD (In Vitro Diagnosis) that the IVD business sector develops and produces swabs, transport mediums, and functional tubes that collect, preserve, and transport disease-causing samples such as microbes and viruses in the surrounding environment and human body.

In the field of biotechnology, we have secured a number of intellectual property rights by developing mediums for cell development, nucleic acid refining kits, research tubes, tips, etc.

Markets (for COVID -19 & Others)

- **CTM** (Clinical Virus Transport Medium)



Feidhmeannacht na Seirbhíse Sláinte
Health Service Executive



SØR-ØST



Markets (for COVID -19 & Others)

- **Applicator** (NBFLOCK SWAB)
- OVER 50Million EA to ABBOTT



- OVER 50Million EA to SDB



SHIPPING History

- MORE THAN 50 Countries
- MORE THAN 80 customers
- MORE THAN 80% LOCAL MARKET SHARING EXCLUSIVELY
- AS OF TODAY, OVER 100 Million EA SHIPPING to OVERSEAS



REST™ SWAB Bacterial Transport Swab with Liquid Media

N-SWAB TRANSPORT™ Bacterial Transport Medium with Agar Gel

T-SWAB TRANSPORT™ Human Papilloma Virus Transport Medium

T-SWAB TRANSPORT™ Nucleic Acid Preservation & Transport Medium



T-SWAB TRANSPORT™ Clinical Virus Transport Medium (CTM) Viral Transport for Virus, Chlamydia, Mycoplasma & Ureaplasma

COVID-19, Virus Collection, Preservation and Transport Medium Kit

CE IVD

FDA
EUA Authorized
DIAGNOSTIC
COLLECTION SYSTEM

What is COVID-19 Sample Collection Kit?
This kit is called CTM (Clinical Virus Transport Medium). CTM is intended for the collection and transport of clinical specimen containing Corona Virus and others.

Why 2 Swabs?
For initial diagnostic testing for COVID-19, CDC (Center for Disease Control and Prevention), Korea CDC recommends collecting and testing upper respiratory (Nasopharyngeal and Oropharyngeal Swabs).

Collection Method for the COVID-19 Specimen

- Collected Samples by each Nasopharyngeal Swab and Oropharyngeal Swab can be preserved in One Virus Transport Medium (CTM) simultaneously.
- Nasopharyngeal Swab: Tilt the patient's head back slightly about 45° ~ 70° to straighten the passage from the front of the nose, and gently insert the swab along the base of the nose (not upwards) until it reaches the nasopharynx-gentle rotation of the swab for a few seconds may be helpful.
- Oropharyngeal Swab: Press the tongue and extract the secretion from the back wall of pharynx.

Cat.No	Description
UTNFS-3B-2	Viral Collection, Preservation and Transport Medium Kit (Nasopharyngeal Swab + Oropharyngeal Swab) + 2ml CTM Tube
UTNFS-3B-2-NIP	UTNFS-3B-2 (2P Package), UTNFS-3B-2-NIP (1P Package)

PACKAGE : 50EA / 1 innerbox, 10 innerbox / 1 cartonbox
(This product is a class II medical device licensed in the republic of Korea)

Nasopharyngeal swab
Oropharyngeal swab

Noble Bio
Noble Biosciences, Inc. (주)노블바이오
TEL: 031-973-0044 FAX: 031-293-0044
URL: www.noblebio.co.kr E-mail: info@noblebio.co.kr

GMP ISO

Noble Biosciences is the manufacturer of collection and transport systems for diagnosis such as dry swab in tube, Clinical Virus Transport Medium (CTM), for virus, agar and liquid transport system for microorganism, nucleic acid transport medium, human papilloma virus transport medium, dropper tubes with collection stick and other diagnostic assemble parts for acomplete whole as malaria, fecal occult blood(FOB), influenza and other rapid test kits.

N-SWAB TRANSPORT™ Plain Dry Swab in Tube



NFS-SWAB APPLICATOR™ Diagnostic & Genetic Swab

CE 2292



Cat.No	Description	Breakpoint Distance	Packaging
NS-1	Standard Swab Applicator [Traditional Standard Swab] with breakpoint Full length of applicator : 144 mm	90mm	500 / Case
NS-2	Standard Swab Applicator [Traditional Standard Swab] without breakpoint Full length of applicator : 144 mm	not breakable	500 / Case
NS-3	Standard Swab Applicator [Traditional Standard Swab] with breakpoint Full length of applicator : 144 mm	30mm	500 / Case
DNS-1	Standard Double Swab Applicator [2pcs] with breakpoint Full length of applicator : 144 mm	90mm	500 / Case
DNS-2	Standard Double Swab Applicator [2pcs] without breakpoint Full length of applicator : 144 mm	not breakable	500 / Case
BNS-1	Big head Swab Applicator with breakpoint Full length of applicator : 144 mm	90mm	500 / Case
Cat.No	Description	Breakpoint Distance	Packaging
CB-1	Cervical Brush Swab Applicator Full length of applicator : 180 mm	90mm	500 / Case
CB-2	Cervical Brush Swab Applicator Full length of applicator : 180 mm	90mm	500 / Case
CB-3	Cervical Brush Swab Applicator (Collection & Cleaning Swab)	90mm	500 / Case
CB-4	Cervical Brush Swab Applicator (Collection & Cleaning Swab)	90mm	500 / Case

Specimen collection swab as biopsy procedure kit is a medical device, class II certified by the Korea FDA and CE MDD CLASS IIa.

CERTIFICATIONS – the qualified competition




FDA 510(k)
FDA EUA
CE - MDD IIa
CE - IVD
kGMP - IVD II
ISO - 13485:2016
CLSI - Member



We are proud to have the quality of our processes and products verified by Qualified Certification Authorities.

CERTIFICATIONS – the qualified competition



FDA 510(k)
FDA EUA
CE - MDD IIa
CE - IVD
kGMP - IVD II
ISO - 13485:2016
CLSI - Member

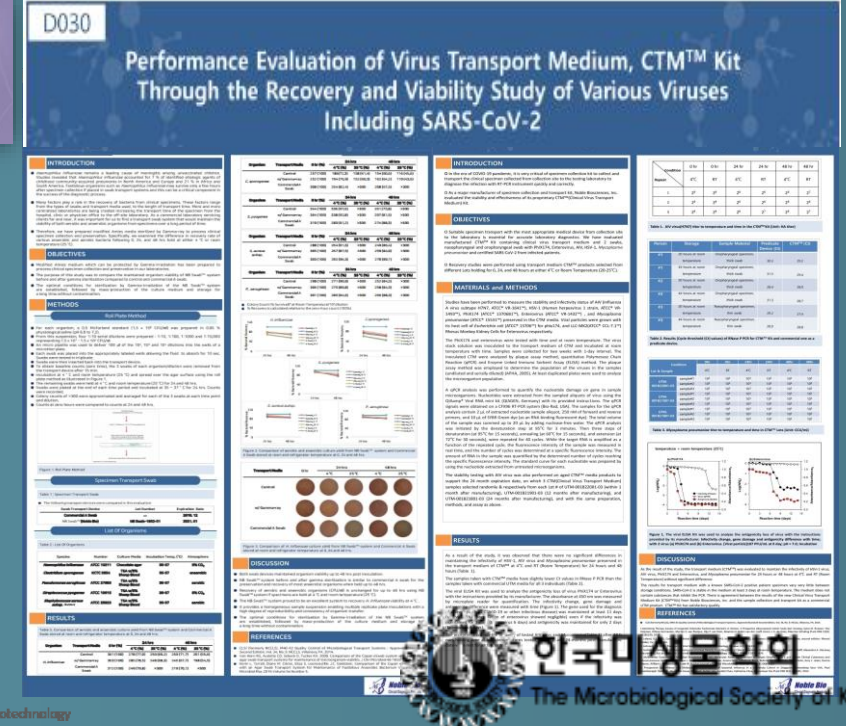
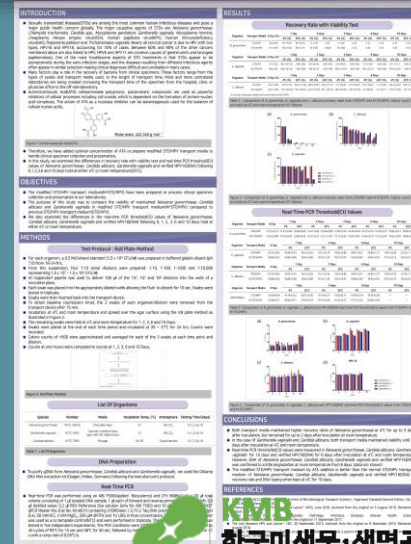


We are proud to have the quality of our processes and products verified by Qualified Certification Authorities.

CORPORATE VISION



Performance Test for the Prepared STD/HPV Specimen Collection and Preservation Media Using *Neisseria gonorrhoeae*, *Candida albicans* and *Gardnerella vaginalis*



Noble Biosciences, Inc is certificated form Inno-Biz (innovation business) and aim for global company with the state of art technology, international competitiveness, and STRONG R&D.

Social Responsibility by DONATION



We are striving to cope against COVID -19 quarantine & any threat to human - beings.

A stylized world map in a light blue color, overlaid with a network of white dots and connecting lines, suggesting global connectivity. The map is centered on the Atlantic Ocean.

THANK YOU

Noble Biosciences, Inc.

13-50, Sinbaek-gil, Jeongnam-myeon, Hwaseong-si, Gyeonggi-do, 18521 Korea

info@noblebio.co.kr

TEL : +82 31 291 0044

FAX : +82 31 291 0046

